

Inter-University Exchange Project  
Support for the Formation of Collaborative Programs  
with African Universities



**Programme for  
Developing Human Resource to  
Contribute to SDGs by Merging  
African Potential and  
Japanese Scientific Technology**

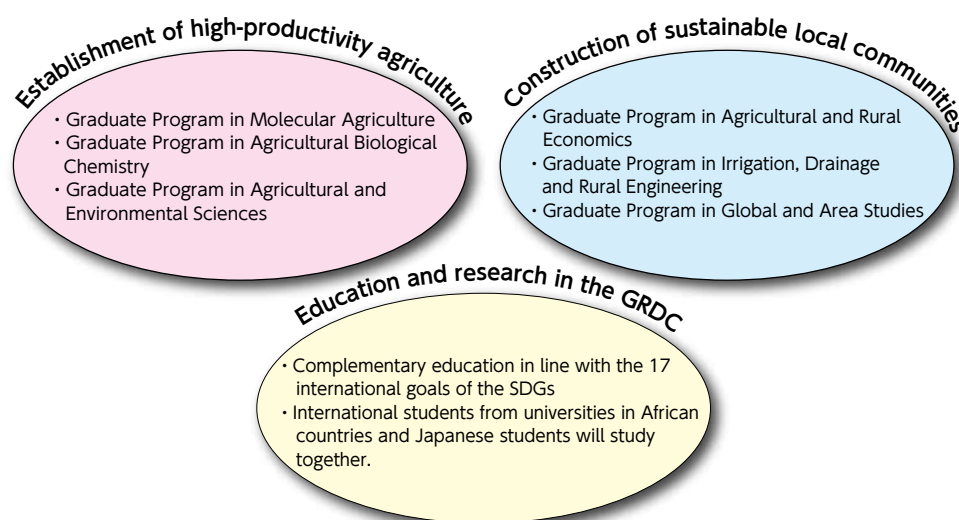
Utsunomiya University - Africa

**We will develop human resource who can understand sustainable development based on the potential and social structure of local communities, and contribute to the joint project of Japan and Africa.**

## Summary of exchange program

- Establishment of high-productivity agriculture based on molecular agriculture and smart agriculture
- Construction of sustainable local communities based on local knowledge and high-productivity agriculture

## Feature of the program



The program will be conducted in the educational programs based on Agriculture and International Studies of the Graduate School of Regional Development and Creativity (GRDC) at Utsunomiya University. The GRDC is characterized by the education and research integrating liberal arts and sciences.

We will develop human resources who can understand sustainable development based on the social structure and potential of local communities in Africa, centered on high-productivity agriculture including a system of distribution, processing and sales, and contribute to joint activities between Japan and Africa.

The feature of this program is to develop glocal highly specialized professionals who have a thorough technique and knowledge of multiple academic fields not only agricultural science but also engineering, business administration, area studies, international development studies, jurisprudence, and sociology, which are necessary to establish high-productivity agriculture.

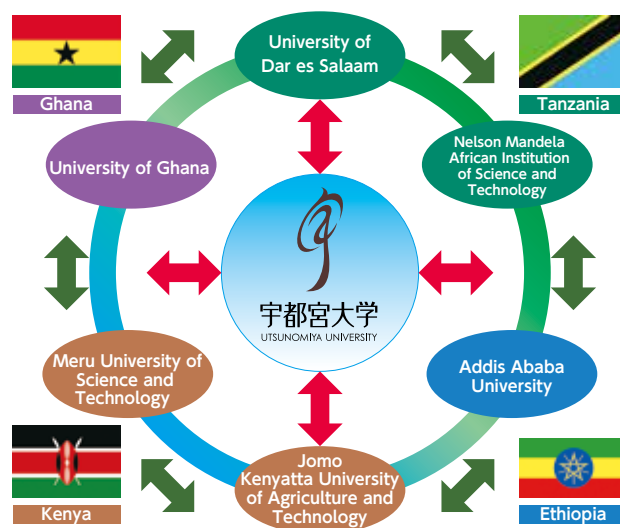
## Global Human Resource on the program

### Human resource development which can contribute to the SDGs

We will make a Potential-finding, Problem solving Project team related to the 17 goals of the SDGs with exchange students from Africa and Japanese students, and contribute to making policy by learning from related lectures, and contribute to the establishment of sustainable and high-productivity agriculture in Africa.

### Promotion of an understanding of local communities

We will take approaches based on an understanding of the social structure of local communities and focus on its potential. Based on the understanding, we will make good use of molecular agriculture and smart agriculture technology and establish high-productivity agriculture which will improve the food production rapidly, and construct a system of distribution, processing, and sales based on it. We will develop glocal highly specialized professionals who can contribute to the sustainable development of local communities.



## Partner Universities



### Jomo Kenyatta University of Agriculture and Technology

The university was established in 1981, supported by JICA (Japan International Cooperation Agency), and now is a huge comprehensive university. It is a successful example of overseas aid by Japan.



### Meru University of Science and Technology

The university is a newly established university, which became independent of the other university in 2013. Its strength lies in agriculture and technique of food science.



### Addis Ababa University

The university was established by Emperor Haile Selassie and is the oldest and biggest university in Ethiopia. It has 7 campuses all over the country.



### University of Dar es Salaam

The university is the biggest university in Tanzania. It is also a first-ranked university.



### Nelson Mandela African Institution of Science and Technology

The university is a graduate school specializing in postgraduate studies and research.



### University of Ghana

The university is the oldest and biggest university in Ghana.



## Contact



Office for Inter-University Exchange Project  
Center for International Exchange  
Utsunomiya University  
350 Mine-machi, Utsunomiya-City, Tochigi, 321-8505  
JAPAN  
TEL : +81-28-649-8162  
FAX : +81-28-649-5117  
Email : [tenkai@miya.jm.utsunomiya-u.ac.jp](mailto:tenkai@miya.jm.utsunomiya-u.ac.jp)

<https://uu-a.utsunomiya-u.ac.jp/en/>